



Alexander Extendable Table

design Midj R&D, 2018

Extendable table with four legs base in lacquered steel. Top in antiscratch glass or crystalceramic.



Colors and Materials

Structure



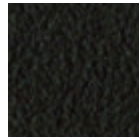
White steel



Black steel



Sand steel

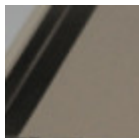


Brown steel

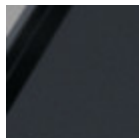


Grafite steel

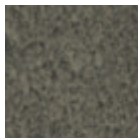
Coating



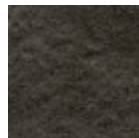
Matt sand antiscratch glass



Matt graphite antiscratch glass



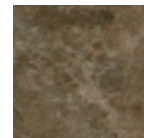
Lead crystalceramic



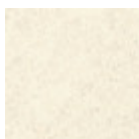
Charcoal savoia crystalceramic



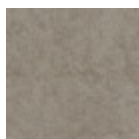
Cement savoia crystalceramic



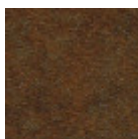
Emperador marble crystalceramic



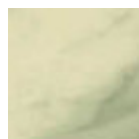
Oxide white crystalceramic



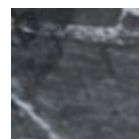
Oxide sand crystalceramic



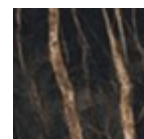
Corten crystalceramic



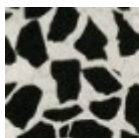
Crystalceramic with effect calacatta marble



Cristalceramica marmo greco nero lucido

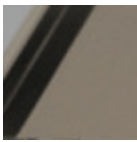


Cristalceramica marmo noir desir

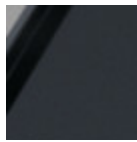


Cristalceramica veneziano

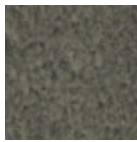
Extensions



Matt sand antiscratch glass



Matt graphite antiscratch glass



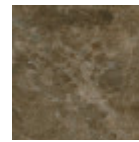
Lead crystalceramic



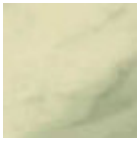
Charcoal savoia crystalceramic



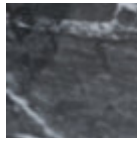
Cement savoia crystalceramic



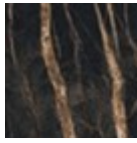
Emperador marble crystalceramic



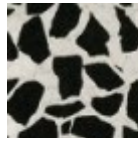
Crystalceramic with effect calacatta marble



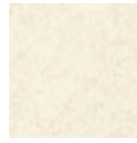
Crystalceramic glossy black greek marble



Crystalceramic with effect noir desir marble



Venetian crystalceramic



Oxide white crystalceramic



Oxide sand crystalceramic



Corten crystalceramic

Dimensions

Dimensions

Volumetric Details

Weight 136 Kg

Volume 0.75 mc

Package 4

Image not found or type unknown

	A	B	C	D
	(cm)	(cm)	(cm)	(cm)
	(inch)	(inch)	(inch)	(inch)
160/240x90	75	160	90	240
(cm)	29.5	63	35.4	94.5
(inch)				
200/300x100	76	200	100	300
(cm)	29.9	78.7	39.4	118.1
(inch)				

Downloads

3ds extendable Alexander (zip) - <https://www.midj.com/images/uploads/resources/3d-midj-alexander-ext-3ds.zip>